



Bolder BioPATH, Inc

Capabilities

IMMUNE MEDIATED DISEASE

Rheumatoid Arthritis

- Adjuvant arthritis prophylactic/therapeutic-rat [R]
- Type II collagen arthritis established/developing-rat [R]
- Type II collagen arthritis established/developing-mouse DBA or B10RIII [R]
- Antigen Induced Knee Arthritis-mouse
- Developing and established antigen arthritis-guinea pig
- Strep Cell Wall Ankle Reactivation Arthritis-rat
- LPS or IL-1 Induced Joint Inflammation-rabbits

Lupus

- MRL/MpJ-Tnfrsf6lpr/J mouse spontaneous lupus nephritis
- NZBWF1/J mouse spontaneous lupus nephritis

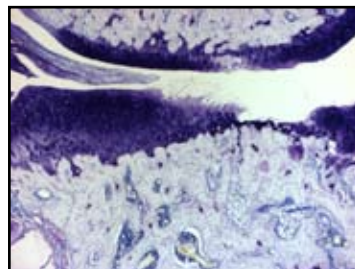
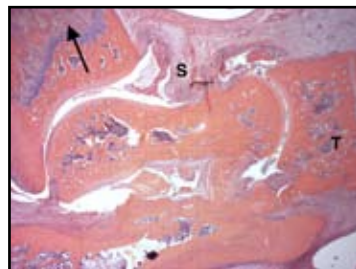
OSTEOARTHRITIS

- Meniscal Tear-Induced OA-rat [R]
- Meniscal Tear-Induced OA-mouse
- Meniscal Tear-Induced OA-guinea pig
- Intra-articular iodoacetate induced cartilage degeneration-guinea pig
- Intra-articular iodoacetate induced cartilage degeneration-rat [R]
- Naturally occurring osteoarthritis-guinea pig
- Meniscectomy (partial medial) model of osteoarthritis-dog [R]
- ACL transection model of osteoarthritis-dog [R]
- Instability-induced OA -mouse [R]
- Lateral Meniscectomy Induced OA-rabbit

PULMONARY DISEASE

- Sephadex induced pulmonary eosinophilia-rat
- Sephadex induced pulmonary inflammation-mouse

* [R] indicates regularly run models.



GENERAL INFLAMMATION

- Oxazolone induced ear delayed type hypersensitivity-mouse [R]
- mBSA induced footpad delayed type hypersensitivity-mouse [R]
- TPA induced ear edema-mouse
- Carrageenan induced paw edema-rat [R]
- Carrageenan induced paw edema-mouse
- LPS induced TNF-mouse, rat and rabbit [R]
- Zymosan Induced Peritonitis [R]
- Intra-articular cytokine or LPS induced inflammation-rabbit
- Pig Cutaneous Delayed Type Hypersensitivity (DNFB) [R]

INTESTINAL DISEASE/SHOCK/PANCREATITIS

Intestinal Disease/Shock

- Indomethacin induced Crohn's (IBD)-rat [R]
- Dextran sulfate induced colitis (IBD)-mouse [R]

Acute Pancreatitis

- Non-lethal, cerulein-induced pancreatitis-rat
- Non-lethal, cerulein-induced pancreatitis-mouse
- Lethal, CDE diet-induced pancreatitis-mouse

MISCELLANEOUS

- Vascular permeability/evans blue dye leakage rat skin
- Mystery protein evaluation
- Transgenic and Knockout evaluation
- Wound Healing-rat

TOXICOLOGY & PHARMACOKINETIC STUDIES

- Pilot toxicology-mouse, rat, rabbit, guinea pig, dog [R]
- Pharmacokinetic testing-rat, mouse, dog (samples analyzed by sponsor) [R]
- GLP toxicology testing-in collaboration with local contract labs
(We are GLP for Pathology)

* [R] indicates regularly run models.

In addition to the models listed above, Bolder BioPATH, Inc also provides:

- **MODEL DEVELOPMENT AS REQUESTED**
- **IN HOUSE OR EXTERNAL TRAINING FOR SURGICAL OR OTHER TECHNIQUES FOR MODEL CONDUCT AVAILABLE**



For more information, please call (303) 633-5400 or
visit www.bolderbiopath.com